

## Royal Preston Hospital Emergency Department

### Monthly Bulletin: January to December 2011

This bulletin provides a breakdown of all injury attendances at Royal Preston Hospital Emergency Department (ED) between January and December 2011.

Between January and December 2011 there were 30,387 attendances to Royal Preston Hospital ED. The month with the highest attendances was October with 2,771 (**Figure 1**). There were more male than female attendances presenting at Royal Preston Hospital ED (males=16,884; 56%).

**Figure 2** illustrates age group of ED attendances for each month. For all injuries the highest proportions of attendances were for persons aged 15-29 (n=8,995; 30%) and 30-59 (n=8,828; 29%) years old.

**Table 1** details the injury group of ED attendances. In almost two-fifths (39%) of attendances, injury group was recorded as falls. Other injury accounted for 35% of attendances, sports injury 10%, road traffic collisions (RTC) 10% and assaults 5%.

**Table 2** illustrates the location of incident for patients attending the Royal Preston Hospital ED. The primary locations of injury were home (31%) and public place (30%). The discharge destination for injury attendances is displayed in **Table 3**. It indicates that half (50%) of attendances were discharged with no follow-up treatment. Nearly a

fifth (16%) of attendances were discharged into the care of their GP and 11% went to the fracture clinic.

#### Assault attendances

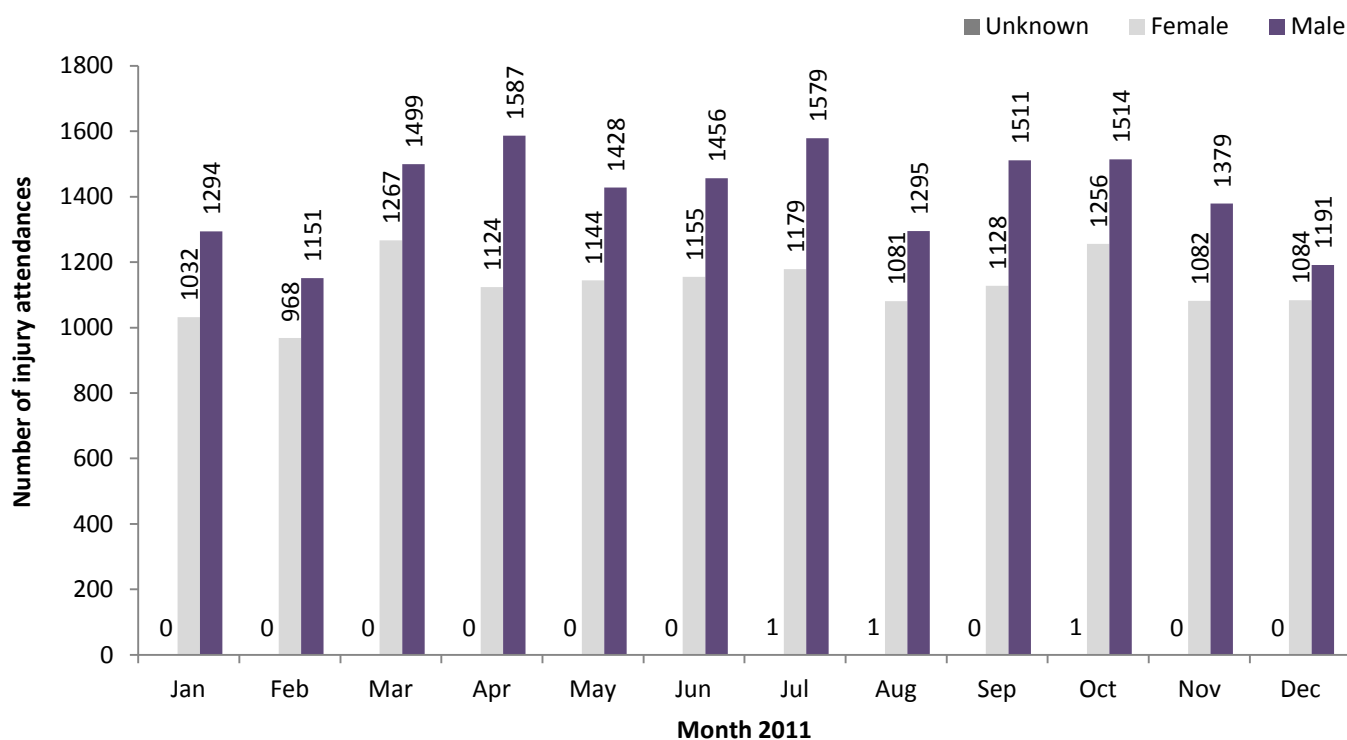
Between January and December 2011 there were 1,604 assault attendances to Royal Preston Hospital ED. The month with the highest attendance was September with 170 attendances (**Figure 3**). There were more male than female assault attendances presenting at Royal Preston Hospital ED (males=1,152; 72%).

**Table 4** details the age group of assault attendances for each month. The majority of ED assault attendances were aged 15-29, (n=959; 60%) and a third (33%) were aged 30-59 (n=535) years.

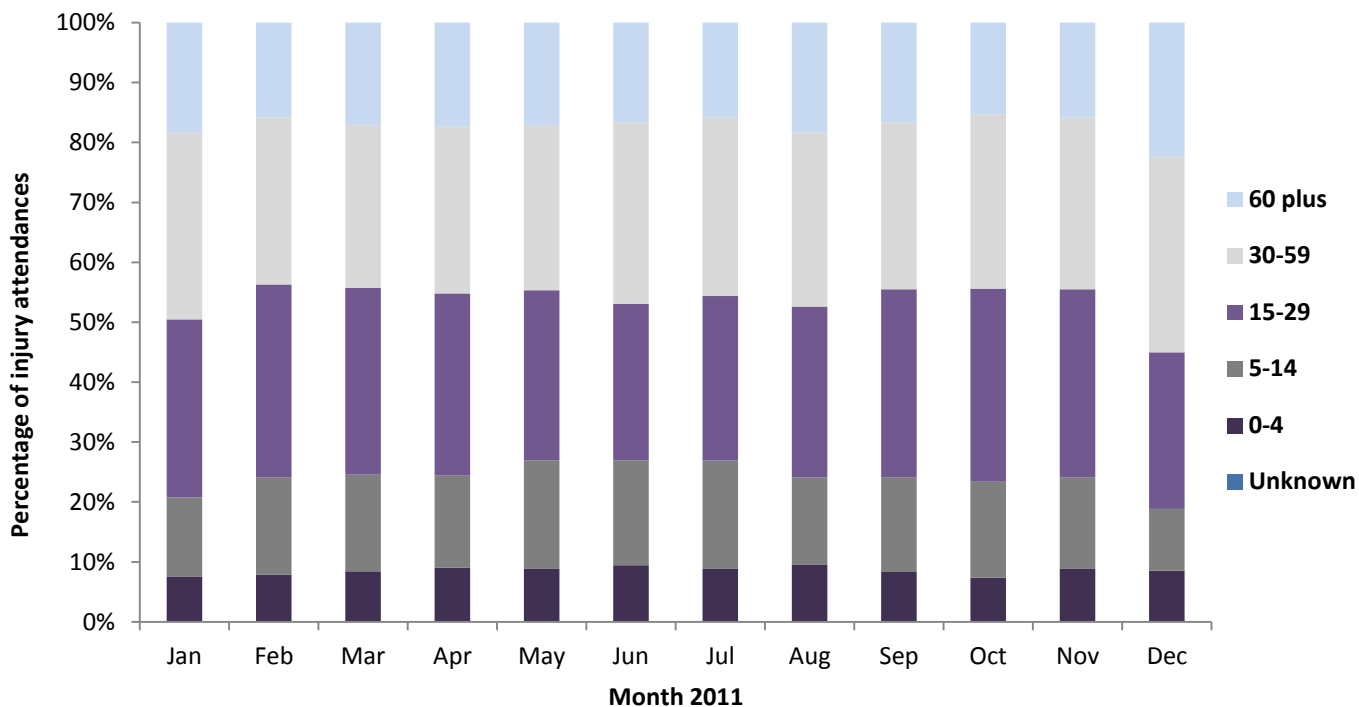
**Table 5** illustrates the incident location for assault attendances to Royal Preston Hospital ED. The primary incident locations for assault attendances were in a public place (65%), followed by home (14%) and other (9%).

The discharge destination for assault attendances is displayed in **Table 6**. It indicates that nearly half (46%) of assault attendances were discharged with no follow-up treatment. A third (33%) of assault attendances required follow-up treatment and 10% were admitted to hospital.

**Figure 1: Gender of ED injury attendances by month, January to December 2011**



**Figure 2: Percentage of ED injury attendances by age group and month, January to December 2011**



**Table 1: ED injury attendances by injury group and month, January to December 2011**

Injury group	Jan	Feb	Mar	Apr	May	Jun	Jul	Aug	Sep	Oct	Nov	Dec	Total	%
Fall	990	721	1025	1078	1049	1047	1094	950	966	1031	854	1038	11843	39
Other injury	735	760	994	917	874	952	1079	893	940	934	867	743	10688	35
Sports injury	221	250	381	294	259	234	208	178	267	325	298	124	3039	10
RTC	244	230	227	238	251	234	215	217	277	295	295	226	2949	10
Assault	117	136	112	152	122	123	139	123	170	156	135	119	1604	5
Deliberate self-harm	19	22	27	32	17	21	24	16	19	30	12	25	264	1
<b>Total</b>	<b>2326</b>	<b>2119</b>	<b>2766</b>	<b>2711</b>	<b>2572</b>	<b>2611</b>	<b>2759</b>	<b>2377</b>	<b>2639</b>	<b>2771</b>	<b>2461</b>	<b>2275</b>	<b>30387</b>	<b>100</b>

**Table 2: ED injury attendances by incident location and month, January to December 2011<sup>1,2,3</sup>**

Location	Jan	Feb	Mar	Apr	May	Jun	Jul	Aug	Sep	Oct	Nov	Dec	Total	%
Home	691	686	874	778	787	777	849	803	767	812	771	852	9447	31
Public place	776	603	727	873	785	785	869	777	804	876	775	613	9263	30
Sport	180	222	312	276	234	229	236	175	239	271	254	122	2750	9
Work	201	173	229	189	197	221	230	198	223	239	196	171	2467	8
Other	155	131	205	172	154	166	142	146	200	214	135	196	2016	7
Educational establishment	174	175	220	89	160	132	113	6	177	178	190	81	1695	6
Other persons home	64	47	66	90	83	78	84	69	71	65	56	89	862	3
Garden	15	19	40	111	66	78	77	66	43	23	19	18	575	2
Holiday	28	16	20	18	23	40	48	59	43	32	15	10	352	1
Public park/playground	5	7	25	67	29	42	55	31	28	18	10	5	322	1
Public building	15	15	10	17	24	22	15	16	11	21	5	90	261	1
Nursery	12	10	20	9	10	17	12	13	10	12	15	7	147	0
Hospital	5	11	6	8	8	<6	10	10	5	***	10	11	91	0
Prison	***	***	7	5	***	6	5	***	10	***	7	***	57	0
Special event	***	***	***	5	7	9	14	***	***	***	***	5	55	0
Public transport	***	***	***	***	***	***	***	***	***	***	***	***	14	0
Bus station	***	***	***	***	***	***	***	***	***	***	***	***	13	0
<b>Total</b>	<b>2326</b>	<b>2119</b>	<b>2766</b>	<b>2711</b>	<b>2572</b>	<b>2611</b>	<b>2759</b>	<b>2377</b>	<b>2639</b>	<b>2771</b>	<b>2461</b>	<b>2275</b>	<b>30387</b>	<b>100</b>

**Table 3: ED injury attendances by discharge destination and month, January to December 2011<sup>4</sup>**

Discharge destination	Jan	Feb	Mar	Apr	May	Jun	Jul	Aug	Sep	Oct	Nov	Dec	Total	%
Discharged - no follow-up	1204	1065	1406	1275	1288	1265	1258	1284	1386	1459	1225	1049	15164	50
Discharged - follow-up by GP	357	321	478	478	426	469	531	338	367	387	395	415	4962	16
Fracture clinic	271	228	280	284	269	264	302	258	276	297	275	254	3258	11
Admitted RPH	230	210	258	303	231	227	268	202	235	222	224	225	2835	9
Other	74	83	73	85	75	72	83	83	77	105	104	74	988	3
ED clinic	70	58	90	76	83	92	74	75	82	83	74	71	928	3
Left before being treated	38	54	77	85	87	81	109	37	75	79	55	71	848	3
Outpatient clinic	47	45	63	69	67	76	74	55	67	83	59	66	771	3
Other healthcare professional	17	33	34	36	29	35	25	30	49	37	30	28	383	1
Transferred to other HCP	9	<9	***	***	<8	12	19	8	15	<7	9	11	109	0
Left having refused treatment	<7	11	***	11	9	13	<13	***	***	9	<10	5	95	0
Police custody	***	***	***	<8	***	5	***	***	<7	***	***	6	45	0
<b>Total</b>	<b>2326</b>	<b>2119</b>	<b>2766</b>	<b>2711</b>	<b>2572</b>	<b>2611</b>	<b>2759</b>	<b>2377</b>	<b>2639</b>	<b>2771</b>	<b>2461</b>	<b>2275</b>	<b>30387</b>	<b>100</b>

## Assaults

**Table 4: ED assault attendances by age group and month, January to December 2011**

Age group	Jan	Feb	Mar	Apr	May	Jun	Jul	Aug	Sep	Oct	Nov	Dec	Total	%
0-4	***	***	***	***	***	***	***	***	***	***	***	***	***	0
5-14	6	12	6	8	8	***	11	***	7	7	5	***	81	5
15-29	81	79	61	87	65	82	77	76	96	100	78	77	959	60
30-59	29	42	44	53	44	37	47	43	64	46	51	35	535	33
60 plus	***	***	***	***	5	***	***	***	***	***	***	***	<28	2
<b>Total</b>	<b>117</b>	<b>136</b>	<b>112</b>	<b>152</b>	<b>122</b>	<b>123</b>	<b>139</b>	<b>123</b>	<b>170</b>	<b>156</b>	<b>135</b>	<b>119</b>	<b>1604</b>	<b>100</b>

<sup>1</sup> Educational establishment includes: educational establishment; school other; school; school playground; and, school sport. 'Public place' includes public place and playing out.

<sup>2</sup> Please note that all numbers less than five have been suppressed (with \*\*\*) in line with patient confidentiality and if there is only one number less than five in a category then two numbers will be suppressed to prevent back calculations from totals.

<sup>3</sup> Please note percentages might not add to one hundred due to rounding.

<sup>4</sup> Admitted to RPH includes: admitted to Royal Preston Hospital (RPH); and, admitted to the Avondale Unit. Other includes: primary care; other; dead on arrival; sea and waterway; and, died in department. HCP=Health care provider and GP=general practitioner.

Figure 3: Number of ED assault attendances by gender and month, January to December 2011

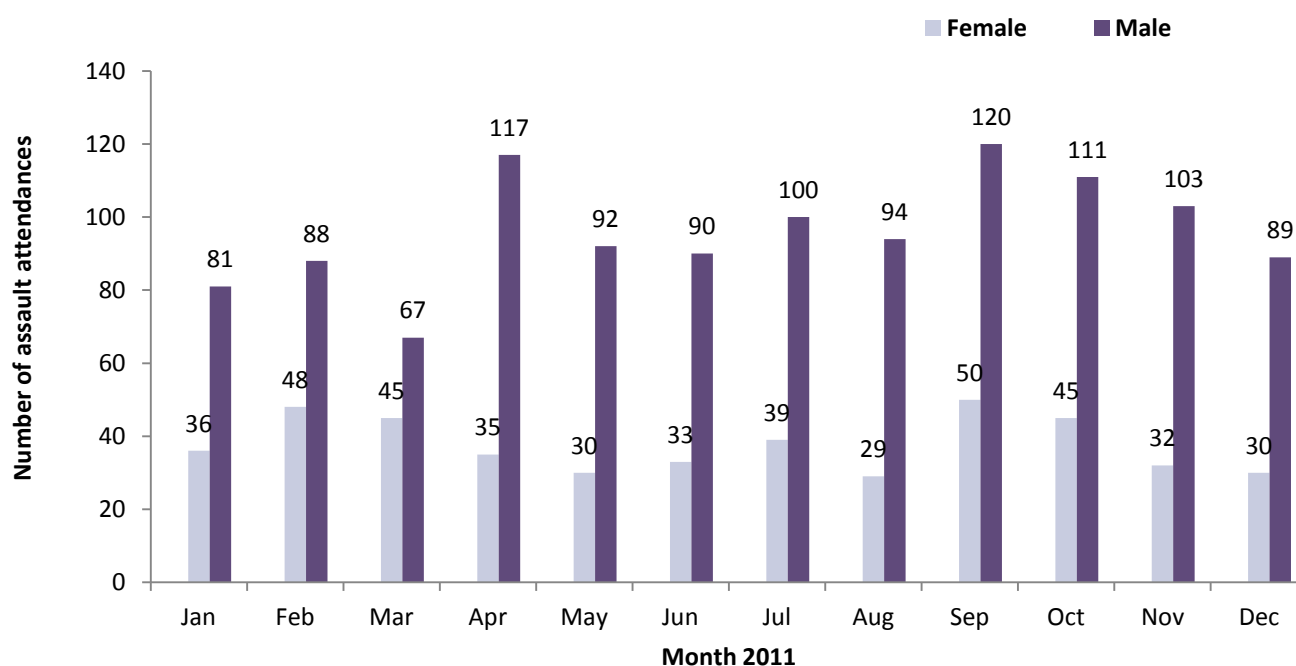


Table 5: ED assault attendances by incident location and month, January to December 2011<sup>5</sup>

Location	Jan	Feb	Mar	Apr	May	Jun	Jul	Aug	Sep	Oct	Nov	Dec	Total	%
Public place	81	81	62	104	67	82	101	103	106	110	92	56	1045	65
Home	12	18	22	16	18	18	21	15	25	17	18	18	218	14
Other	7	15	13	15	19	8	***	***	14	14	6	23	138	9
Work	7	8	***	5	5	***	***	***	10	6	6	5	64	4
Other persons home	***	***	***	5	***	5	6	***	5	***	***	***	45	3
Educational establishment	***	8	6	***	***	***	***	***	***	***	6	***	35	2
Public building	***	***	***	***	***	***	***	***	***	***	***	10	22	1
Public park/playground	***	***	***	***	***	***	***	***	***	***	***	***	11	1
Prison	***	***	***	***	***	***	***	***	***	***	***	***	10	1
Holiday	***	***	***	***	***	***	***	***	***	***	***	***	8	0
Garden	***	***	***	***	***	***	***	***	***	***	***	***	***	0
Hospital	***	***	***	***	***	***	***	***	***	***	***	***	***	0
Special event	***	***	***	***	***	***	***	***	***	***	***	***	***	0
Sport	***	***	***	***	***	***	***	***	***	***	***	***	***	0
<b>Total</b>	<b>117</b>	<b>136</b>	<b>112</b>	<b>152</b>	<b>122</b>	<b>123</b>	<b>139</b>	<b>123</b>	<b>170</b>	<b>156</b>	<b>135</b>	<b>119</b>	<b>1604</b>	<b>100</b>

Table 6: ED assault attendances by discharge destination and month, January to December 2011

Discharge destination	Jan	Feb	Mar	Apr	May	Jun	Jul	Aug	Sep	Oct	Nov	Dec	Total	%
Discharged	54	60	53	67	61	50	60	64	87	68	62	51	737	46
Follow-up	32	43	35	55	32	48	45	42	49	52	48	44	525	33
Other	12	16	13	19	15	15	20	8	22	20	16	11	187	12
Admitted	19	17	11	11	14	10	14	9	12	16	9	13	155	10
<b>Total</b>	<b>117</b>	<b>136</b>	<b>112</b>	<b>152</b>	<b>122</b>	<b>123</b>	<b>139</b>	<b>123</b>	<b>170</b>	<b>156</b>	<b>135</b>	<b>119</b>	<b>1604</b>	<b>100</b>

Published February 2012

Johnathan Rooney (TIIG Officer)

Centre for Public Health, Liverpool John Moores University, 2nd Floor, Henry Cotton Campus, Liverpool, L3 2ET

Tel: 0151 231 4513 Email: [j.rooney@ljmu.ac.uk](mailto:j.rooney@ljmu.ac.uk)

Website: [www.tiig.info](http://www.tiig.info) (please note data requests should be made through the website)

<sup>5</sup> Educational establishment includes: educational establishment, school other, school, school playground and school sport. Public place includes public place and playing out.